

**Model : ARXC036GTEH / ARXC45GATH / ARXC60GATH
ARXC072GTEH / ARXC090GTEH / ARXC096GTEH**



ARXC036GTEH
ARXC45/60GATH



ARXC072/090GTEH



ARXC096GTEH

Specifications

Model name			ARXC036GTEH	ARXC45GATH	ARXC60GATH*	ARXC072GTEH*	ARXC090GTEH*	ARXC096GTEH*
Power source			Single phase, ~230V, 50Hz					
Capacity	Cooling	kW	11.2	12.5	18.0	22.4	25.0	28.0
	Heating		12.5	14.0	20.0	25.0	28.0	31.5
Input power		W	207	715	730	681	819	838
Air flow rate	High	m ³ /h	1,990	3,500	3,500	3,900	4,300	4,850
	Med		1,680	3,000	3,000	3,300	4,000	4,250
	Low		1,330	2,460	2,460	3,000	3,500	3,600
Static pressure range		Pa	0 to 200	100 to 250	100 to 250	0 to 300	0 to 300	0 to 300
Standard static pressure			100	100	100	150	150	150
Sound pressure level	High	dB(A)	42	49	49	47	48	48
	Med		36	45	45	43	46	45
	Low		32	42	42	40	44	42
Net Dimensions (H × W × D)		mm	400 × 1,050 × 500	400 × 1,050 × 500	400 × 1,050 × 500	450 × 1,587 × 700	450 × 1,587 × 700	550 × 1,587 × 700
Weight		kg(lbs)	40 (88)	46 (101)	46 (101)	84 (185)	84 (185)	105 (231)
Connection pipe diameter	Liquid	mm	9.52 (Flare)	9.52 (Flare)	9.52 (Flare)	9.52 (Flare)	9.52 (Flare)	9.52 (Brazing)
	Gas		15.88 (Flare)	19.05 (Flare)	19.05 (Flare)	19.05 (Flare)	19.05 (Flare)	22.22 (Brazing)
Drain hose diameter (I.D./O.D.)			25/32					

Note : Specifications are based on the following conditions.
Cooling : Indoor temperature of 27°CDB / 19°CWB, and outdoor temperature of 35°CDB / 24°CWB.
Heating : Indoor temperature of 20°CDB / (15°CWB), and outdoor temperature of 7°CDB / 6°CWB.
Pipe length : 7.5 m; Height difference between outdoor unit and indoor unit : 0 m. Voltage : 230 [V].
*: ARXC60/072/090/096G cannot be connected to J-IV/J-IVS Series.

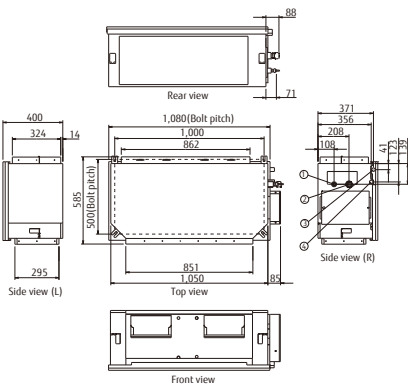
Optional parts

- Long-Life Filter : UTD-LF60KA (036/45/60)
- IR Receiver Unit : UTB-YWC (45/60)
UTY-TRHX (036/072/090/096)
- External Power Supply Unit : UTZ-GXXA (036/072/090/096)
- Wireless LAN Interface : UTY-TFSXZ1 (036/072/090/096)

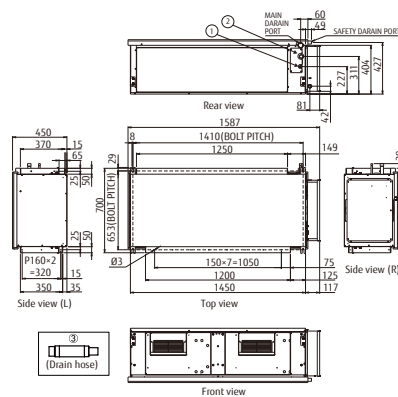
Dimensions

(Unit : mm)

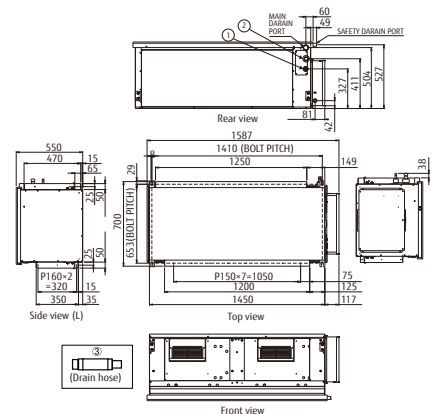
Models: ARXC036 / ARXC45 / ARXC60



Models: ARXC072 / ARXC090



Models: ARXC096



- ① Refrigerant piping flare connection (Liquid)
- ② Refrigerant piping flare connection (Gas)
- ③ Drain piping connection (safety drain pan)
- ④ Drain piping connection (Main drain pan)

- ① Refrigerant pipe flare connection (Liquid)
- ② Refrigerant pipe flare connection (Gas)
- ③ Drain hose

- ① Refrigerant pipe flare connection (Liquid)
- ② Refrigerant pipe flare connection (Gas)
- ③ Drain hose